



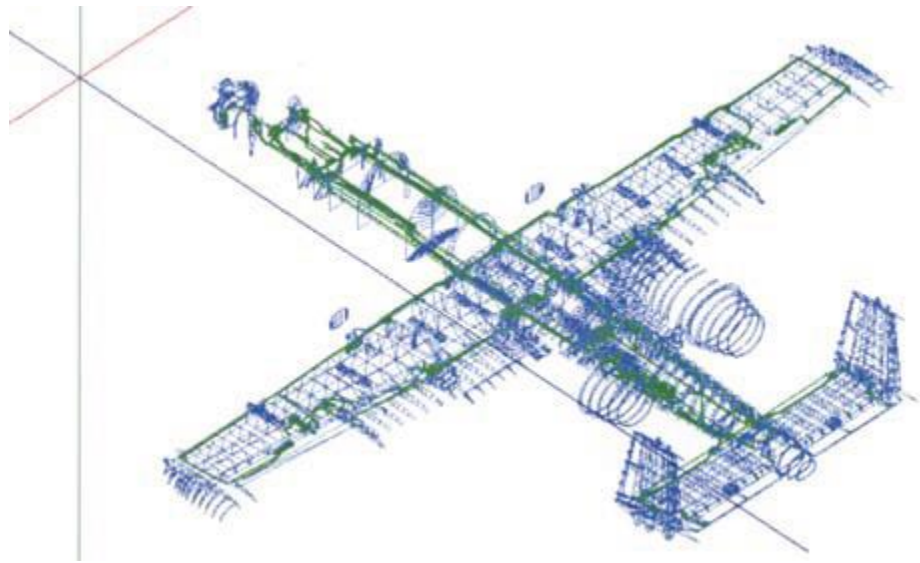


COVART is capable of modeling the damage mechanisms induced by threats using several methods. The analyst's selection of the damage mechanism modeling method is dependent upon the threat type and failure modes of the equipment being modeled, and a given component may be vulnerable to several damage effects. Damage criteria used for Pcd/h functions include hole size, damage distance, airgap distance, and impactor mass and velocity. The model is capable of assessing the effect of component and system redundancy through the use of failure analysis trees (fault trees) and multiple vulnerable (MV) systems.

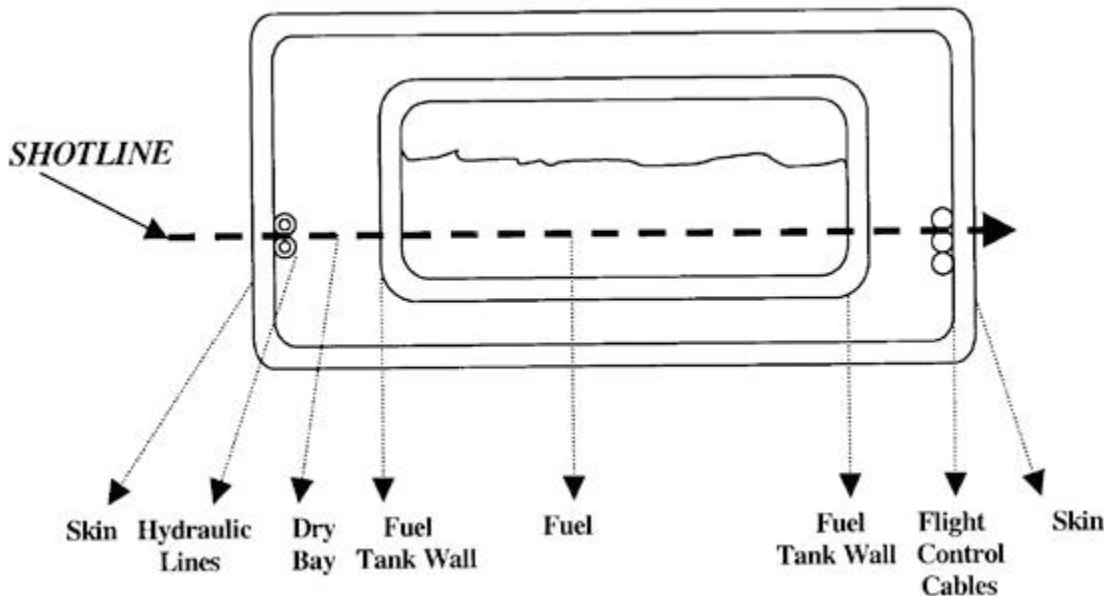
Documentation available with COVART includes; a User's Manual, Theory and Implementation Manual, and Verification and Validation Manual. Additional documentation for interface and validation of libraries integrated with COVART are also included.

## FASTGEN - Fast Shotline Generator

The estimation of ballistic damage to military systems has long been an objective for military analysts. Whether it is to determine a system's compliance with vulnerability specifications, support testing activities, or assess a system's vulnerability performance, determining how ballistic threats affect the functioning of a system is important to the defense community. The Fast Shotline Generator (FASTGEN) assists in the assessment of ballistic vulnerability. FASTGEN identifies the ballistic threats that may impact in attacks against a system of interest.



FASTGEN utilizes ray tracing to identify the portions of a system potentially impacted by ballistic threats. This methodology involves projecting rays, representing threat trajectories, through a user-defined geometry description of the system of interest. FASTGEN calculates the points of intersection between the rays and geometry and transforms this



data into shotlines, which are sequential lists of system components possibly encountered along the associated trajectories. The information associated with a shotline includes identification of system components in the threat's path as well as parameters

associated with each intersection: intersection locations, lines-of-sight through impacted components, component normal thicknesses, obliquity angles, and distances between components. Once generated, a ballistic vulnerability program, such as COVART, can use FASTGEN-generated shotline information to estimate threat penetration, component damage, and system vulnerability. Additionally, FASTGEN can support COVART analyses involving either parallel or diverging rays.

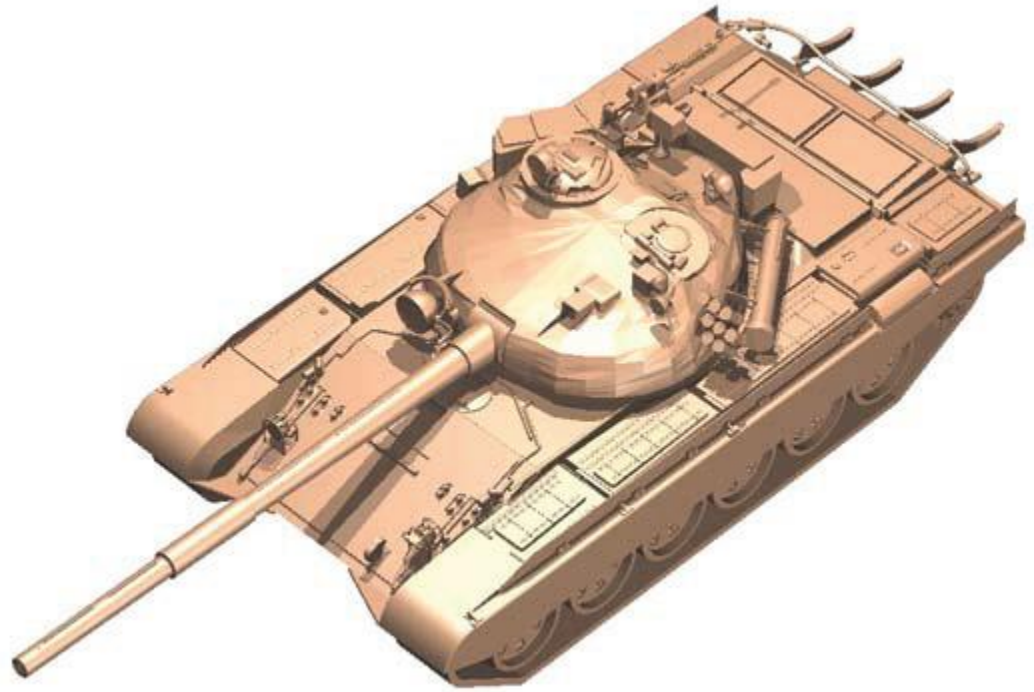
In the past, FASTGEN was a standalone program and exported shotline descriptions to binary and text output files. However, with the development of COVART6, FASTGEN has become a shared library within COVART's framework. In its current form, FASTGEN supplies shotline information directly to COVART on an "on-demand" basis. The user can still generate shotline output files, but they must exercise the legacy features of COVART6 to do so. While these legacy features are still available, AFLCMC/EZJA highly recommends using the newer, integrated process in COVART6, as doing so may also improve the runtimes associated with analyses and provide access to newer features.

The inputs to FASTGEN are descriptions of the system of interest and the rays to trace. The VTK includes a User's Manual that describes how analysts can provide these inputs. In addition to user documentation, the VTK also includes reports describing the theory behind FASTGEN and the efforts to verify and validate the program.

FASTGEN is a simple model with a simple mission: determine the ballistic threats that may hit in an attack against a particular system. This mission aids the completion of vulnerability analyses, which in turn, supports the design and fielding of effective weapon systems assisting the modern warfighter.

# BRL-CAD – Ballistic Research Laboratory Computer-Aided Design Package

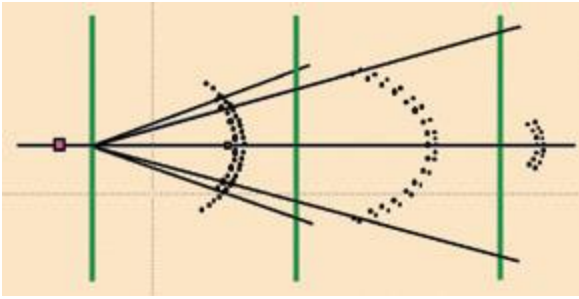
BRL-CAD is a powerful cross-platform open source solid modeling system. The system can be used to create, import, prepare, and analyze 3-D geometric target descriptions. It includes interactive graphical geometry editing, a powerful high-performance solid ray-tracing library, multiple optical rendering features, image and signal-processing tools, a system performance analysis benchmark suite, an embedded Tcl/Tk scripting interface, a robust high-performance geometric



representation and analysis library, and a large collection of related tools and utilities. BRL-CAD is a hybrid modeling system supporting the import and editing for a great variety of solid and surface geometric representations, including implicit primitives with Boolean expressions; explicit boundary representation (BREP) Non-Uniform Rational B-Spline (NURBS) surfaces, n-Manifold polygonal mesh geometry (NMG), and triangle mesh (BoT) geometry; volumetric medical scan data models; terrain models; point cloud data sets; and more.

The package supports geometry editing with constructive solid geometry (CSG) Boolean operations, such as union, intersection, and subtraction. BRL-CAD also provides tools for performing model validation and verification (V&V), including computing mass, moments of inertia, and centroids, as well as detecting overlap interferences and other hierarchical modeling issues. For application developers, BRL-CAD also supports a rich application development API through which geometry, ray tracing, and attribute data are passed to other applications. The system runs on all major desktop and supercomputer platforms, including BSD, Linux, Mac OS X, Windows, and various UNIX operating systems. In addition, BRL-CAD is an actively developed open source project with open participation from contributors around the world.

# FATEPEN – Fast Air Target Encounter Penetration Program



FATEPEN is a set of fast-running algorithms that simulate the penetration of and damage to spaced target structures by compact and noncompact warhead fragments and long rods at speeds up to 5 km/s. The model predicts penetrator mass loss, velocity loss, trajectory change, and tumbling throughout a target. The mass loss model includes an impact fracture model that, depending on impact conditions, transforms an incident intact warhead fragment into an expanding, multi-particle debris cloud, which FATEPEN then tracks through the remaining target structure. FATEPEN also predicts multi-particle loading and damage to plate structures.

The FATEPEN model is based, as much as possible, on fundamental principles of mechanics together with assumptions regarding the principal loading and response mechanisms involved. The latter derive directly from experimental observation. Empirical elements have been introduced either to obtain better agreement with available test data or to describe phenomena not readily amenable to first principle analytical modeling.

The penetration algorithms comprise deterministic and analytical/empirical engineering models and are contained in a separate Dynamic Link Library for easy portability to other calling programs. A Visual Basic graphical user interface is used to define and/or select penetrators, targets and encounter conditions in the stand-alone PC version of the code. The FATEPEN algorithms have been partially validated by comparisons between model predictions and test results for a variety of projectile and target combinations.

The primary application of the code has been target vulnerability and weapon lethality assessments involving air targets and lightly armored surface targets. FATEPEN has been transitioned to use by all three Services and is used as a subordinate model in a number of simulations, including the Advanced Joint Effectiveness Model (AJEM).

## Input

Varies depending on the software used.

### COVART:

requires the following data for execution of an analysis:

- Geometric target description (FASTGEN or BRL-CAD format)
- Component material and criticality information
- Component Pcd/h data
- System probability of kill given damage (Pk/d) data
- Fault tree data
- Threat characterization data

### FASTGEN:

A geometric representation of the system's geometry is the key input to FASTGEN. Ray descriptions are also required. Ray descriptions include a direction (i.e., azimuth and elevation) as well as inputs relating which aim points to process.

## **BRL-CAD:**

BRL-CAD input includes 2-D or 3-D coordinate and vector description data for all components included in a geometric target description. Geometry models can be imported, created manually using tools, or created procedurally using shell scripts and programs. Additional optional inputs include material properties and density and lighting properties such as reflectivity, transparency, and color.

## **FATEPEN:**

Required FATEPEN penetrator input includes penetrator material, hardness, shape, weight, dimensions, and initial velocity and orientation. Additional material properties and inertial parameters are computed or assigned by FATEPEN.

# Output

---

Varies depending on the software used.

## **COVART:**

The COVART model determines the vehicle vulnerable area or probability of kill (Pk) as a function of kill level. The kill levels are user defined and can be time- or operational-capability-based, with up to 15 kill levels per analysis. The vulnerable area and Pk data can be output in tabular format for each system and the total target, as well as by shotline in a format suitable for graphical display (Pk Plot).

## **FASTGEN:**

FASTGEN provides shotline information directly to COVART. If using the legacy mode of COVART, the outputs are binary or text shotline files containing all of the intersections between threat rays and the system's geometry model.

## **BRL-CAD:**

BRL-CAD primary output is a 3-D geometric target file in a machine-independent binary format. Additional output options include a neutral ASCII file format, various common CAD file formats, wireframe plots, rendered images, line-of-sight (LOS) data files, and text summary files (e.g., component code list, solid primitives with coordinate parameters, and object overlap interferences). Additional tools are also available for managing and enhancing image files, generating video animations, and converting to/from BRL-CAD format.

## **FATEPEN:**

FATEPEN predicts the individual particle hole diameter and enlargement of the central hole to a diameter due to a combination of multi-particle area removal and/or multi-particle impulsive loading. The individual plate damage output listings include the overall pattern diameters, enclosing both perforating and nonperforating penetrator and plate particles, respectively, and the diameters of the circles, enclosing just the perforating secondary particles of each kind. FATEPEN also predicts the total impulse delivered to the plates by perforating and nonperforating particles along with the total area of all the holes and the total mass removed from the plate.

## **Page Distribution Statement:**

Distribution Statement A: Approved for public release; distribution is unlimited.

## **Host Systems:**

PC: Windows and Linux

## **Program Language:**

Multiple (varies depending on the tool)